

BEGA



Color Guide

Contents

Standard Powder Coat Finishes & RAL Colors	03
Metal	04
Wood Stains	05
High-Pressure Laminate	06
High Performance Concrete	07



Standard Powder Coat Finishes

All BEGA standard finishes are matte, textured powder coat with minimum 3 mil thickness. BEGA Unidure® finish provides superior fade protection in Black, Bronze, and Silver. BEGA standard White and Natural Bronze are a super durable polyester powder.



Premium Color

Our newest color offering is a super durable polyester powder finish that has the look and feel of cast bronze. Consult factory for more information.



Natural Bronze

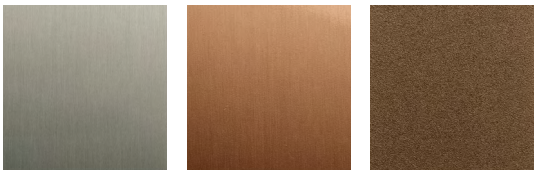
RAL Colors

Optionally available RAL and custom color finishes are provided in either polyester powder or liquid paint. All RAL finishes are provided in matte, finely textured finish unless otherwise requested.



Metal

A number of BEGA exterior luminaires are available in #4 brushed stainless steel. Selections from the BOOM collection are available in natural copper or natural cast bronze, which will develop a natural patina over time.



Stainless Steel

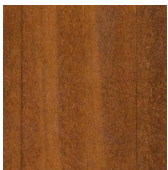
Copper

Cast Bronze

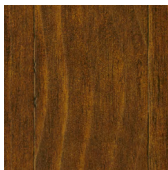


Wood Stains

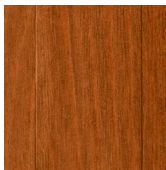
Wood is finished smooth with a minimum of four coats of stain to both color and protect the wood, optionally available with a brushed finish. BEGA can supply you with wood stain for maintenance up to 20 years after purchase.



Tyrol Pine



Brume



Chestnut



Ferrara Oak



Tonnelier



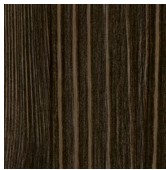
Rustic



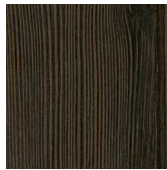
Original Mineral



Alizé



Terre d'Ombre



Basalt



Meteor



High-Pressure Laminate

BEGA Furniture harmonizes aluminum structures finished in BEGA Unidure® with durable and robust High-Pressure Laminate (HPL) surfaces, available in two standard colors



Polar Oak



Marshland Oak



High Performance Concrete

The RENDEZVOUS Collection by Aubrilam is a collection of outdoor furniture that introduces a third material, high performance concrete, offering flexibility that complements most project types and construction materials.



High Performance
Concrete



