



Wall luminaires

Unshielded

A series of unshielded wall luminaires with light output on three sides. The linear shape of these luminaires with their square profile makes them particularly suitable for installation on columns and walls.

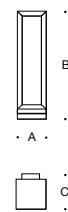
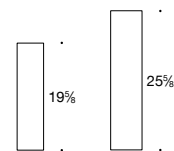
Die-cast and extruded aluminum · White acrylic diffuser

LED color temperatures: 2700 K, 3000 K, 3500 K, 4000 K

BEGA luminaires offer a minimum service life of 60,000 hours, with suitable LED replacement modules guaranteed for up to 20 years after date of purchase. Further LED technical data including luminous flux, CRI, dimming and electrical characteristics are provided on the individual luminaire specification sheets, available at www.bega-us.com

All BEGA standard finishes are matte, textured powder coat with minimum 3 mil thickness. BEGA Unidure® finish, a fluoropolymer technology, provides superior fade protection in Black, Bronze, and Silver. BEGA standard White, as well as optionally available RAL and custom colors, are a polyester powder.

NRTL listed to North American standards · Suitable for wet locations · Protection class IP 65



Wall luminaires				
	LED	A	B	C
24 505	11.4 W	5 ½	19%	7 ⅞
24 506	18.6 W	6 ¼	25%	7 ⅞

