



Wall washer
with symmetric, asymmetric or lateral throw light distribution

A series of wall mounted luminaires with symmetric, asymmetric, or lateral throw light distribution. Symmetric light distribution is used to illuminate facade and wall surfaces, with the installation surface also acting as the reflection surface. Asymmetric light distribution is used to illuminate ceiling or ground surfaces adjacent to the mounting surface. Lateral throw light distribution is used to illuminate ground surfaces along walls.

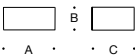
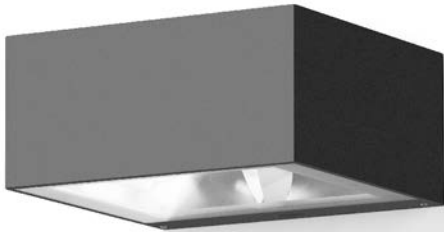
Die-cast aluminum · Safety glass · Reflector made of pure anodized aluminum

LED color temperatures: 2700 K, 3000 K, 3500 K, 4000 K

BEGA luminaires offer a minimum service life of 60,000 hours, with suitable LED replacement modules guaranteed for up to 20 years after date of purchase. Further LED technical data including luminous flux, CRI, dimming and electrical characteristics are provided on the individual luminaire specification sheets, available at www.bega-us.com

All BEGA standard finishes are matte, textured powder coat with minimum 3 mil thickness. BEGA Unidure® finish, a fluoropolymer technology, provides superior fade protection in Black, Bronze, and Silver. BEGA standard White, as well as optionally available RAL and custom colors, are a polyester powder.

NRTL listed to North American standards · Suitable for wet locations
Protection class IP 65



Symmetric light distribution				
	LED	A	B	C
22 392	17.9 W	9%	4 1/8	7 3/4
33 388	43.4 W	12%	4 7/8	8 1/2



Asymmetric light distribution				
	LED	A	B	C
22 386	17.9 W	9%	4 1/8	7 3/4
33 386	43.4 W	12%	4 7/8	8 1/2



Lateral throw light distribution				
	LED	A	B	C
22 383	15.8 W	9%	4 1/8	7 3/4
33 378	43.4 W	12%	4 7/8	8 1/2