



In-grade floodlights
with stainless steel housing

A series of in-grade location luminaires and floodlights with symmetric, asymmetric and adjustable light distributions. These luminaires are designed to bear pressure loads up to 4400 lbs. from vehicles with pneumatic tires. The luminaires must not be used for traffic lanes where they are subject to horizontal pressure from vehicles braking, accelerating and changing direction.

Stainless steel housing and faceplate · White or clear safety glass
Reflectors made of pure anodized aluminum

LED color temperatures: 2700 K, 3000 K, 3500 K, 4000 K

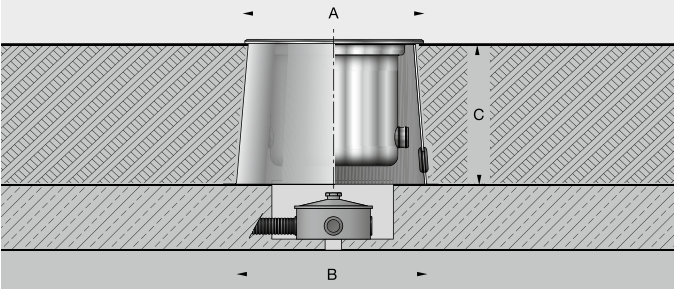
BEGA luminaires offer a minimum service life of 60,000 hours, with suitable LED replacement modules guaranteed for up to 20 years after date of purchase. Further LED technical data including luminous flux, CRI, dimming and electrical characteristics are provided on the individual luminaire specification sheets, available at www.bega-us.com

Luminaires are provided with #4 brushed stainless steel trims.

NRTL listed to North American standards · Suitable for wet locations
Protection class IP 68

In-grade floodlights
with stainless steel housing

Pressure loads	4400 lbs.
Material	S/steel · S/steel casting
Protection class	IP 68
Installation depth	6 3/4 - 10 inch
Diameter Ø	5 3/4 · 12 7/8 inch



Location luminaires · **white** safety glass

	LED		A	B	C
77 055	2.1 W		5 3/4	10 5/8	7 1/2
77 056	3.0 W		8 1/8	10 5/8	7 1/2
77 057	6.3 W		9 5/8	12 1/4	8 1/4
77 058	8.4 W		12 7/8	16	10



Symmetric floodlights · **clear** safety glass

	LED	β	A	B	C
77 006	8.2 W	17°	8 1/8	10 7/8	7 1/2
77 007	13.9 W	24°	9 5/8	12 1/4	8 1/4
77 040	36.2 W	24°	12 7/8	16	10



Asymmetric floodlights · **clear** safety glass

	LED	β	A	B	C
77 105	4.2 W	24 × 27°	5 3/4	10 5/8	6 5/8
77 106	8.2 W	24 × 27°	8 1/8	10 5/8	7 1/2
77 107	13.9 W	28 × 29°	9 5/8	12 1/4	8 1/4
77 116	36.2 W	23 × 25°	12 7/8	16	10



Adjustable floodlights · **clear** safety glass

	LED	β	A	B	C
77 145	3.0 W	28°	5 3/4	10 5/8	6 3/4
77 146	5.7 W	16°	8 1/8	10 5/8	7 1/2
84 115	18.5 W	8°	11	13 3/4	8 5/8
77 147	19.3 W	15°	11	13 3/4	8 3/8
77 148	17.2 W	12°	12 7/8	15 1/2	10

Accessories



10 042	10 013
10 043	10 014
—	—
10 047	10 016
10 048	10 019

Spread lenses  wide beam  flat beam β = Beam angle

