



**Pole-top luminaires**  
with symmetric or asymmetric wide beam light distribution

A series of single and twin pole-top luminaires with symmetric or asymmetric wide beam light distribution. The symmetric light distribution is ideal for illuminating squares, plazas. The wide beam light distribution is ideally suited for illuminating roads and pathways.

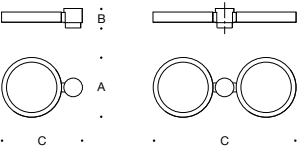
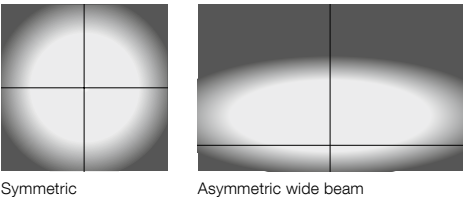
Die-cast aluminum and extruded aluminum · Clear safety glass  
Reflector made of pure anodized aluminum

LED color temperatures: 2700K, 3000K, 3500K, 4000K

BEGA luminaires offer a minimum service life of 60,000 hours, with suitable LED replacement modules guaranteed for up to 20 years after date of purchase. Further LED technical data including luminous flux, CRI, dimming and electrical characteristics are provided on the individual luminaire specification sheets, available at [www.bega-us.com](http://www.bega-us.com)

All BEGA standard finishes are matte, textured powder coat with minimum 3 mil thickness. BEGA Unidure® finish, a fluoropolymer technology, provides superior fade protection in Black, Bronze, and Silver. BEGA standard White, as well as optionally available RAL and custom colors, are a polyester powder.

NRTL listed to North American standards · Suitable for wet locations  
Protection class IP 65



Pole-top luminaires · symmetric					
	LED		A	B	C
99 401	16.0 W	Single	11 ¾	3 ⅞	16
99 403	(2) 16.0 W	Twin	11 ¾	3 ⅞	28 ⅝

Pole-top luminaires · asymmetric wide beam					
	LED		A	B	C
99 402	16.0 W	Single	11 ¾	3 ⅞	16
99 407	32.0 W	Single	18 ½	3	24
99 462	(2) 16.0 W	Twin	11 ¾	3 ⅞	28 ⅝
99 408	(2) 32.0 W	Twin	18 ½	3	44 ¼

Poles for above luminaires – see page 406 - 411.

