



Catenary luminaires

with asymmetric wide beam light distribution

A series of luminaires for catenary suspension sytems with asymmetric wide beam light distribution. The cable hanger system is suitable for transverse suspension systems and longitudinal chain systems. The luminaires are designed specifically to illuminate streets, squares, access roads, and pedestrian zones.

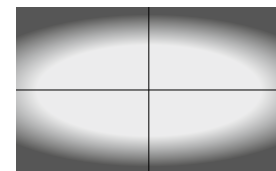
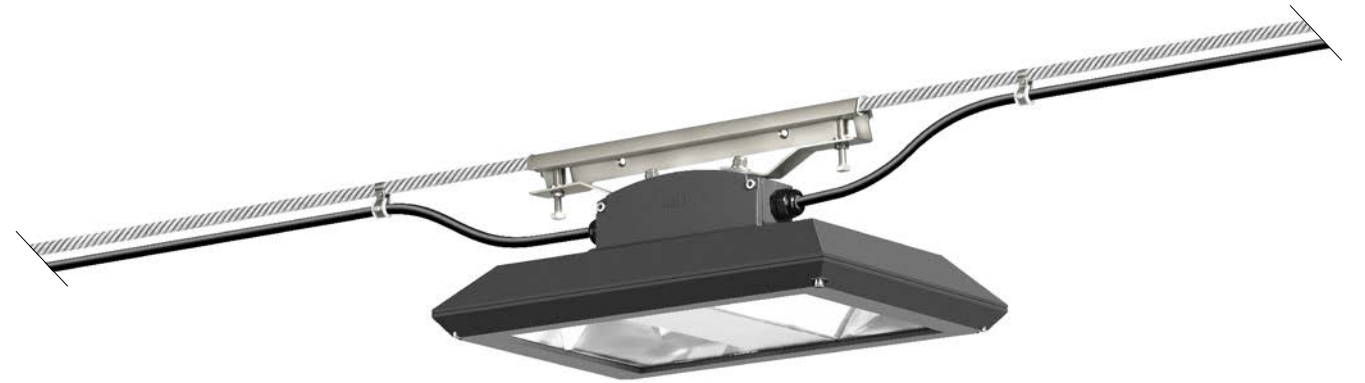
Die-cast aluminum · Clear safety glass with anti-reflective coating for increased transmission
Reflector made of pure anodized aluminum · Cable hanger made of stainless steel

LED color temperatures: 2700 K, 3000 K, 3500 K, 4000 K

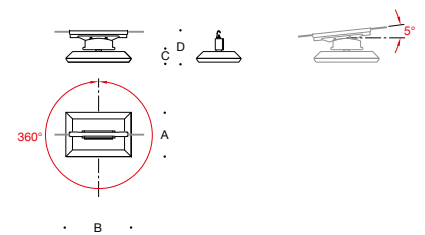
BEGA luminaires offer a minimum service life of 60,000 hours, with suitable LED replacement modules guaranteed for up to 20 years after date of purchase. Further LED technical data including luminous flux, CRI, dimming and electrical characteristics are provided on the individual luminaire specification sheets, available at www.bega-us.com

All BEGA standard finishes are matte, textured powder coat with minimum 3 mil thickness. BEGA Unidure® finish, a fluoropolymer technology, provides superior fade protection in Black, Bronze, and Silver. BEGA standard White, as well as optionally available RAL and custom colors, are a polyester powder.

NRTL listed to North American standards · Suitable for wet locations · Protection class IP 66



Asymmetric wide beam



Catenary luminaires					
	LED	A	B	C	D
99 458	31.2 W	12 ¼	18 ⅛	3	9
99 459	47.8 W	12 ¼	18 ⅛	3	9
99 460	62.0 W	12 ¼	18 ⅛	3	9