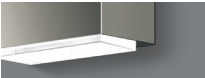




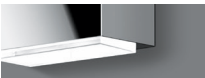
Select the desired exterior finish by using appropriate code number as suffix.



White
Code number **.1**



Stainless steel
Code number **.2**



Chrome
Code number **.3**

Wall luminaires
Light output on two sides

A family of wall luminaires with up and down light distribution. Sleek, precise edges of this shallow luminaire housing are complemented by thick walled crystal glass accents. Together the combination is an elegant addition to stairways or corridors, or used to distinguish a particular area in a large, open space. Provided with electronic driver.

Crystal glass diffuser with white interior finish · Die-cast zinc housing

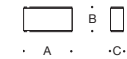
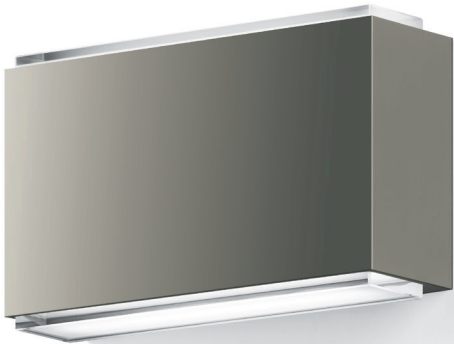
Select the desired exterior finish by using appropriate code number as suffix

- White Code number **.1**
- Stainless steel Code number **.2**
- Chrome Code number **.3**

LED color temperatures: 2700K, 3000K, 3500K, 4000K

BEGA can supply you with suitable LED replacement modules for up to 20 years after the purchase of LED luminaires – see page 186. Further LED technical data including luminous flux, CRI, service life, and dimming and electrical characteristics are provided on the individual luminaire specification sheets, available at www.bega-us.com.

NRTL listed to North American Standards, interior use only
Refer to page 185 for more information



Wall luminaire					
		LED	A	B	C
50 072	ADA	13.2W	6 7/8	4 1/4	2 1/8