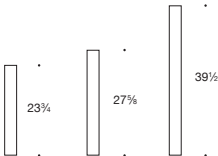


An internal mechanism allows the glass to be swiveled in and out for easy installation and maintenance.



**Wall luminaires**  
Unshielded

Hand-blown, three ply opal glass and precise metal accents in perfect harmony. This family of wall luminaires is a powerful lighting design tool for a variety of interior applications, arranged individually or in groups. An inner mechanism allows the glass to be swiveled in and out of place for simple installation and maintenance. This design also makes them ideal for installations in niches between walls, either vertically or horizontally. Provided with electronic driver.

Hand-blown, three-ply opal glass · Metal housing

Select the desired finish by using appropriate code number as suffix

- Stainless steel      Code number **.2**
- Chrome              Code number **.3**

All luminaires on this page mount to a custom BEGA 19 537 recessed wiring box – see page 184. This wiring box is able to be shipped ahead of the luminaire.

LED color temperatures: 2700K, 3000K, 3500K, 4000K

BEGA can supply you with suitable LED replacement modules for up to 20 years after the purchase of LED luminaires – see page 186. Further LED technical data including luminous flux, CRI, service life, and dimming and electrical characteristics are provided on the individual luminaire specification sheets, available at [www.bega-us.com](http://www.bega-us.com).

NRTL listed to North American Standards, interior use only  
Refer to page 185 for more information



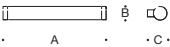
Select the desired finish by using appropriate code number as suffix



Stainless steel  
Code number **.2**



Chrome  
Code number **.3**



Wall luminaire					
	LED	A	B	C	Required wiring box
<b>50 068</b>	19.6W	23 3/4	3 1/8	4 1/2	<b>19 537</b>
<b>50 069</b>	23.6W	27 5/8	3 1/8	4 1/2	<b>19 537</b>
<b>50 070</b>	35.4W	39 1/2	3 1/8	4 1/2	<b>19 537</b>